

Actuator for smoke extraction dampers 90°↔
in fire smoke extraction systems

- Torque 15 Nm
- Nominal voltage AC 230 V
- Control: Open/close
- Damper rotation: 12 mm form-fit


Technical data

Electrical data	Nominal voltage	AC 230 V, 50/60 Hz		
	Power supply range	AC 198 ... 264 V		
	Switching thresholds	Min. ON voltage	AC 198 V	
		Max. OFF voltage	AC 100 V	
	Power consumption	Operation	7 W @ nominal torque	
		End position	0.5 W	
		Rating	14 VA / I _{max.} 8.2 A at 5 ms	
	Auxiliary switch	2 x 1 PDT		
	Contact rating (silver contact)	6 (3) A, AC 250 V ☐		
	(gold-plated silver contact)	1 mA ... 6 A, DC 5 V ... AC 250 V ☐		
Switching points	3°↔ / 87°↔ (referring to 0 ... 90°↔)			
Tolerance	±2°↔			
Connection	Motor	Cable 1 m, 3 x 2 mm ² (halogen-free)		
	Auxiliary switch	Cable 1 m, 6 x 2 mm ² (halogen-free)		
Functional data	Torque (nominal torque)	Min. 15 Nm at nominal voltage		
	Inhibiting torque	Dynamic	15 Nm	
		Static	18 Nm	
	Direction of rotation	Can be selected by mounting L / R		
	Angle of rotation	Max. 95°↔ (incl. 5°↔ mechanical overrun)		
	Running time	<30 s for 90°↔		
	Sound power level	Max. 60 dB (A)		
	Damper rotation	12 mm form-fit		
	Position indication	Mechanical with pointer		
	Service life	Min. 10 000 cycles		
Safety	Protection class	II totally insulated ☐		
	Degree of protection	IP54 in all mounting positions		
	EMC	CE acc. to 2004/108/EC		
	low-voltage directive	CE according to 2006/95/EC		
	Mode of operation	Type 1.C (EN 60730-1)		
	Rated impulse voltage	4 kV		
	Control pollution degree	3		
	Ambient temp. range	Standard operation	-30 ... +50 °C	
		Safety function	See «Safety function»	
	Non-operating temperature range	-40 ... +80 °C		
Ambient humidity range	According to EN 60730-1			
Maintenance	Maintenance-free			
Dimensions / weight	Dimensions	See «Dimensions» on page 3		
	Weight	Approx. 2 700 g		

Safety notes


- The actuator is not allowed to be used outside the specified field of application, especially in aircraft or in any other airborne means of transport.
- **Caution: Power supply voltage!**
- The actuator is adapted and mounted to the fire and smoke damper by the damper manufacturer. For this reason, the actuator is only supplied direct to safety damper manufacturers. The manufacturer then bears full responsibility for the proper functioning of the damper.
- The device may only be opened at the manufacturer's site. It does not contain any parts that can be replaced or repaired by the user.

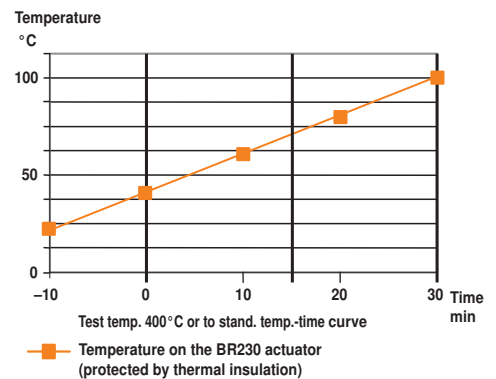
Safety notes

(continued)

- The device contains electronic and electrical components and may not be disposed of with the household waste. Observe local regulations and valid laws.

Product features

Mode of operation	2-wire open-close control. The actuator is overload-proof and can thus remain energised even at the end stops.
Signalling	Two microswitches with fixed settings are installed in the actuator for indicating the damper end positions. The position of the damper blade can be read off on a mechanical position indicator.
Manual operation	The hand crank supplied with the actuator can be used for manual operation. The damper function can thus be tested easily.
Standards / regulations	<ul style="list-style-type: none"> • Draft DIN 18232, Part 6, September 1992 <ul style="list-style-type: none"> – Fire protection in industrial buildings – Smoke and heat extraction systems • Preliminary standard ÖNORM H 6029, May 1997 <ul style="list-style-type: none"> – Ventilation systems – Fire smoke extraction systems • Excerpts from: <ul style="list-style-type: none"> – CEN/TC191, 1996 – NA BAU, 1997
Safety function	The safety function is guaranteed within the temperature range shown in the diagram, which is based on ÖNORM H 6029 and DIN 18232.



Accessories

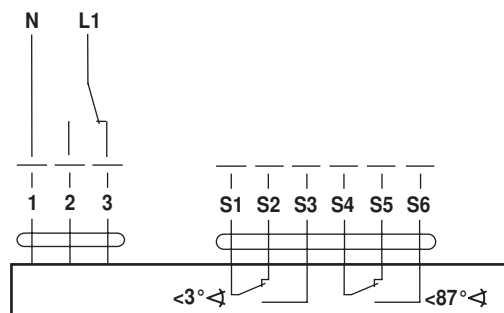
	Description	Type
Electrical accessories	Auxiliary switch, 1 x PDT 6 A (2.5 A), AC 250 V	SN1
	Auxiliary switch, 2 x PDT 6 A (2.5 A), AC 250 V	SN2
Mechanical accessories	Adapter with clamp for rotary axes up to 20 mm for BF.. and BLF..	ZK-BF
	Adapter with DM18 rotary axis, L = 33 mm, for BF.. and BLF..	ZA18-BF
	Bracket for SN1 and SN2 auxiliary switches for BF..	ZSN-BF

Electrical installation

Wiring diagram

Note

- Caution: Main power supply voltage !
- Parallel connection of several actuators possible. Power consumption must be observed !



Dimensions [mm]

Dimensional diagrams

